



**CHANGE**<sup>TM</sup>  
*Since 1912*

**INSTANT FOUNDATIONS**<sup>®</sup>  
AND PRE-CAST CONCRETE COLLARS

COMMERCIAL GRADE

For immediate installation, a steel luminaire foundation screws in place by hydraulic rotary equipment mounted on common construction vehicles. For quick wiring, a cableway is precut in the pipe shaft.

## PERMANENT FOUNDATION ANCHORING

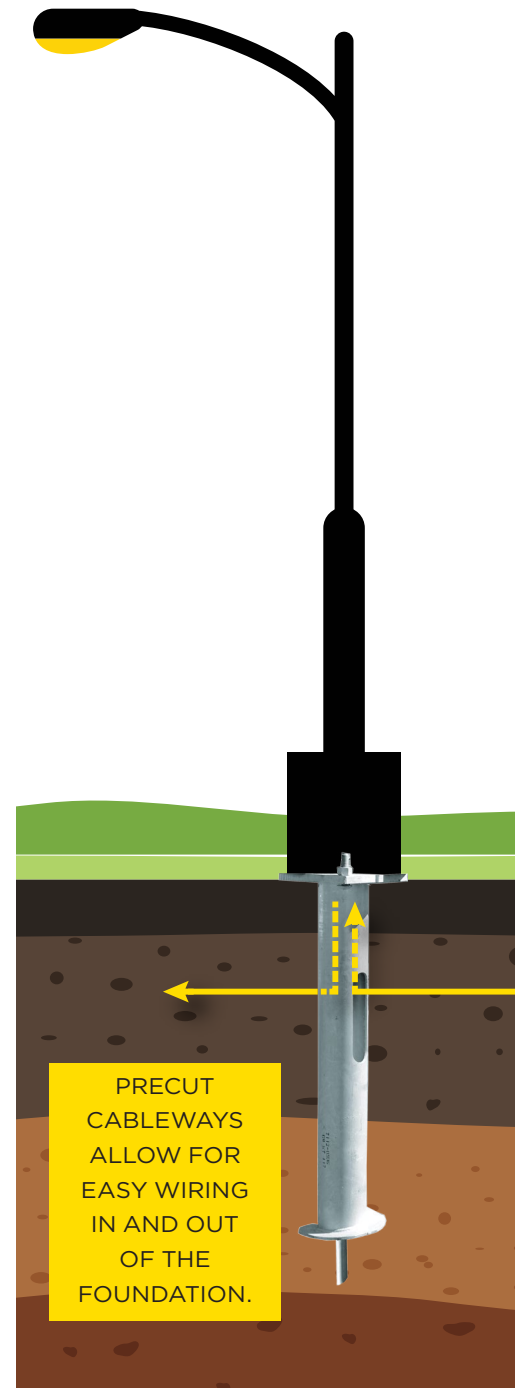
Instant Foundations are pre-engineered helical piles specifically designed for above-grade and at-grade mounting for decorative or architectural, roadway/DOT, or area/parking lighting.

These one-piece foundation bases have high-strength pipe shafts to resist bending moments and substantial installing-torque ratings. They often can be installed through macadam surfaces.

## ONE TRIP CUTS COSTS AND SAVES TIME

Be more profitable and meet your customers' concerns with immediate-loading, low-cost installations. CHANCE Instant Foundation® Systems deliver the total product with a performance that builds reputation.

This pre-engineered system is based on more than 100 years of helical foundation research and development. Midwest-based Hubbell Power Systems, Inc. is an ISO-9001 certified manufacturer marketing to electric utility, telecommunication, pipeline, railroad, and deep foundation industries worldwide.

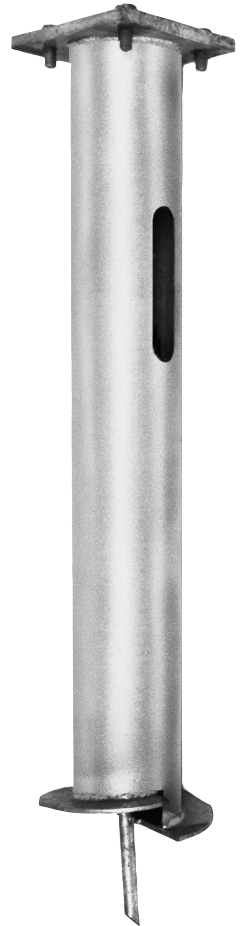




## ECONOMICAL AND VERSATILE

Use CHANCE Instant Foundation® products for a variety of applications. Present job specifications and design details to our in-house application engineers to ensure the success of each project.

- Job ready, pre-engineered
- Installs in any weather
- Site-specific designs
- One trip install



## DOT AND UTILITY LIGHTING APPROVED

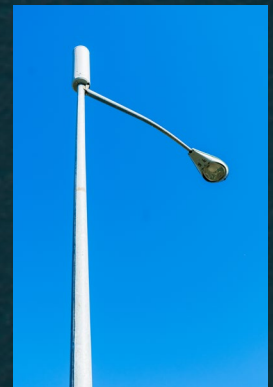
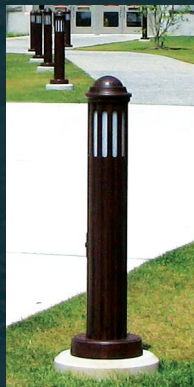
Approved for use by many state DOTs and in compliance with American Association of State Highway and Transportation Officials (AASHTO) Section 13.0 of the Standard Specification for Structural Supports for Highway Signs, Luminaries, and Traffic Signals.

CHANCE Instant Foundations® Helical Piles typically install in minutes for immediate mounting of the superstructure. By design, these steel foundations overcome the stress of tension, compression, and lateral shear loads. Highly resistant to overturning moments, they are selected based on site and application requirements.

Generally, a Factor of Safety (FS) is a minimum of 2:1 on all permanent loading conditions. A consulting engineer or certified installing contractor can select the correct diameter and length of foundation required based on site specific soil conditions and the loads applied. The structural strength of the foundation is designed to exceed the capacity required.

## APPLICATIONS

- STREETLIGHT
- ROADWAYS
- EV CHARGING STATIONS
- BOLLARDS
- SIGNAGE
- SOLAR ARRAY POLE MOUNT
- 5G POLES
- ARCHITECTURAL
- PARKING LOTS
- SPORTS LIGHTING
- END ZONE TOWER SYSTEM
- DECORATIVE



POWER INSTALLS,  
NO SITE PREPARATION



**QUICK AND EASY INSTALLATION**

Without excavating, a CHANCE Instant Foundation® can be screwed through most soils and loose blacktop surfaces. The welded spiral plate (a true helix) acts as a screw during installation and a load-bearing member in place. Installation compacts the surrounding soil but does not remove any significant volume below grade.

By design, the foundation resists all associated loads: wind, compression, and uplift. If required, the foundation can be removed by the same method as installed and reused.

To construct a light standard at grade, simply install the foundation to full depth. Next, excavate to the cableway in the side of the foundation and insert the electrical conduit up through the baseplate.

**KEY INSTALLATION BENEFITS:**

- Designed for mounting in minutes while matching any base designs
- Compliant with AASHTO Standard Specifications for Structural Supports for Highway Signs, Luminaires and Traffic Signals
- All components are Hot-Dip Galvanized per ASTM 123 and/or ASTM 153 to a minimum 3-mil coat thickness
- Variable Bolt Circle Style allows for fast bolt-up as the slotted design mates with most light standards



**FULL INSTALLATION IN LESS THAN AN HOUR**

CHANCE Instant Foundations reduce manpower, material, and mess.

	Step 1	Step 2	Step 3	Step 4	Step 5	Step 6
<b>Conventional Concrete Base</b>						
<b>CHANCE Instant Foundations</b>						



## CHANCE HELICAL PILE INSTALLATION VS. OTHER FOUNDATION TYPES

Benefit	CHANCE Instant Foundation	Poured-in-place Foundation	Direct-Buried Pole	Pre-cast Foundation
Install during all types of weather	✓			
Install in below freezing temps	✓			
Can be salvaged for reuse when lighting standard is relocated	✓			✓
Low installation costs: 10 minutes with a two person crew	✓			
No expensive anchor bolts	✓		✓	
No misaligning anchor bolts	✓		✓	
Clean, no-excavation installation	✓			
Job done with one trip to the job site	✓		✓	✓
No requirement for leveling side slope of right-of-way	✓			
Turn-key solution where no concrete or rebar is required	✓		✓	✓
Use the same installing equipment that augers holes	✓		✓	
Higher production rate with immediate pole attachment	✓			✓
High overturning moment resistance	✓	✓		✓

### Think other technologies are easier? Think again!

#### Poured-in-Place

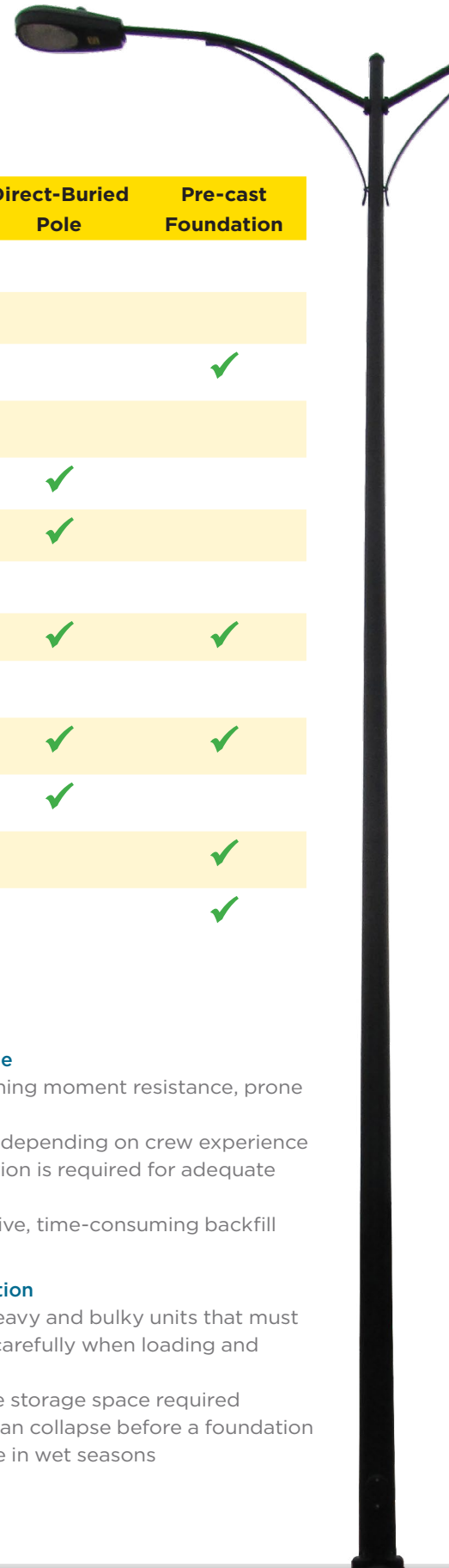
- Installation must be made during relatively dry periods, and if below freezing, increased cure time is required.
- Virtually no reuse possibility. Concrete foundation may need to be removed before relocation.
- Higher installation costs: excavation, forming, rebar, finishing work, etc.
- Require several pieces of equipment to be transported to the installation site
- Long anchor bolts add cost to each pole installation cost. If set incorrectly, expensive repairs are needed.
- Excess dirt (spoils) must be hauled away and heavy concrete trucks can damage job site.
- Several trips to the site are required to excavate, form, and pour. Then, after curing, another trip to set the standard and begin wiring.
- Top of concrete foundation must be leveled on sloping right-of-way.

#### Direct-Buried Pole

- Low overturning moment resistance, prone to leaning
- Results vary depending on crew experience
- Field inspection is required for adequate capacity
- Labor intensive, time-consuming backfill compaction

#### Pre-Cast Foundation

- Extremely heavy and bulky units that must be handled carefully when loading and unloading
- Considerable storage space required
- Excavation can collapse before a foundation is set in place in wet seasons



## LIGHT POLE STANDARDS PRODUCTS

CHANCE Instant Foundation® Lighting and Signs products for light pole standards are designed to resist both lateral forces and overturning moments from wind loads. Controlling design standards for wind loads can be determined either by consulting local or national building codes or conformance to standards set by the AASHTO.

These standards will provide the required design wind load based on geographic region and the factors associated with the shape and type of structure in order to determine the resulting wind pressure.

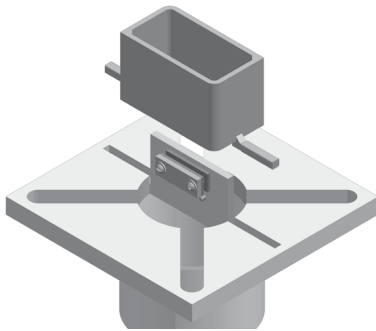
"The new lights and foundations that were added in our park were a great addition to the town decor, adding more than ample light for safety and widespread visibility that really dresses up the park surroundings. The crew loved the quick set up and ease of installation."

- Mike Forsee, Director of Public Works & Utilities



## ANTI-THEFT FOUNDATION

The CHANCE® Anti-Theft Foundation is a device designed to protect both the public and private sectors from the high cost and intrinsic dangers of wire theft. The concept is simple. The wires run through a clamping mechanism, which prevents the wire from being pulled out of the ground through the baseplate. The clamping assembly can be removed at any time during foundation installation, making it easier to run conduit and install wiring.



## HISTORY & INNOVATION SINCE 1912



The CHANCE helical pile was the first foundation stabilization system created for remedial repair. Today, CHANCE products continue to lead the industry with innovative solutions that are widely accepted for quality and performance within the deep foundation industry. Hubbell Power Systems proudly manufactures the CHANCE brand family for residential, commercial, industrial, electric utility, oil and gas, pipeline, mooring, railroad, and renewable energy markets. Backed by over 100 years of engineering experience, CHANCE helical pile systems offer a technologically advanced and cost effective alternative to concrete and other foundation systems. CHANCE helical piles comply with the 2021, 2018, 2015, 2012, and 2009 International Building Code (IBC), are ICC-ES Approved, and ISO:9001 Certified.



## FINISHING THE JOB: NEVER POUR CONCRETE AGAIN!

Designed to enhance the appearance and functionality of streetlight foundations, CHANCE Precast Concrete Collars are an ideal, ready-made solution to specify in conjunction with CHANCE Instant Foundations.

CHANCE Precast Concrete Collars are a unique offering in the streetlight foundation industry and providing you a single source for both the Instant Foundation and its finished collar.

Available in various heights and diameters, Precast Concrete Collars drop onto the Instant Foundation's base and the pole is ready to mount. With no concrete to cure, the collars can be installed in any weather and are ready to use immediately after installation.

Specify the CHANCE Instant Foundations steel helical pile and Precast Concrete Collar together to provide a high-strength steel lighting structural support enhanced with a quality architectural base appearance.

KEY BENEFITS:	CHANCE	Traditional Concrete
No site casting concrete required	✓	
No stripping or parching of Sonotube	✓	
Consistent architectural concrete appearance	✓	
Single trip to job site	✓	
All-weather installation speed	✓	
Green-friendly - Relocate & Reuse	✓	
Proven pre-engineered design	✓	
Cost efficiency	<b>Save 10-25% over Concrete*</b>	

\*Depending on local labor rates

Specify the CHANCE Instant Foundations steel helical pile and Precast Concrete Collar together to provide a high-strength steel lighting structural support enhanced with a quality architectural base appearance.

## SERVING MARKETS GLOBALLY

Hubbell Power Systems manufactures a wide variety of transmission, distribution, substation, OEM and telecommunications products used by utilities. In addition, HPS products are used in the civil construction, transportation, gas and water industries. Products include construction and switching products, tools, insulators, arresters, pole line hardware, cable accessories, test equipment, transformer bushings and polymer precast enclosures and equipment pads.

# HELICAL SOLUTIONS

## DEEP FOUNDATION PRODUCTS

FOUNDATION REPAIR

DISASTER RECOVERY

NEW CONSTRUCTION

TELECOM & TRANSMISSION

TIEBACK ANCHORS

OUTDOOR LIGHTING

SOIL SCREW

ENVIRONMENTAL TIEDOWNS

Never Compromise™



CHANCE Civil Construction | 210 North Allen Street | Centralia, MO 65240 | United States of America

©Copyright 2021 Hubbell Incorporated. Because Hubbell has a policy of continuous product improvement, we reserve the right to change design and specifications without notice.

Printed in the U.S.A. | BR04331E\_0921

